



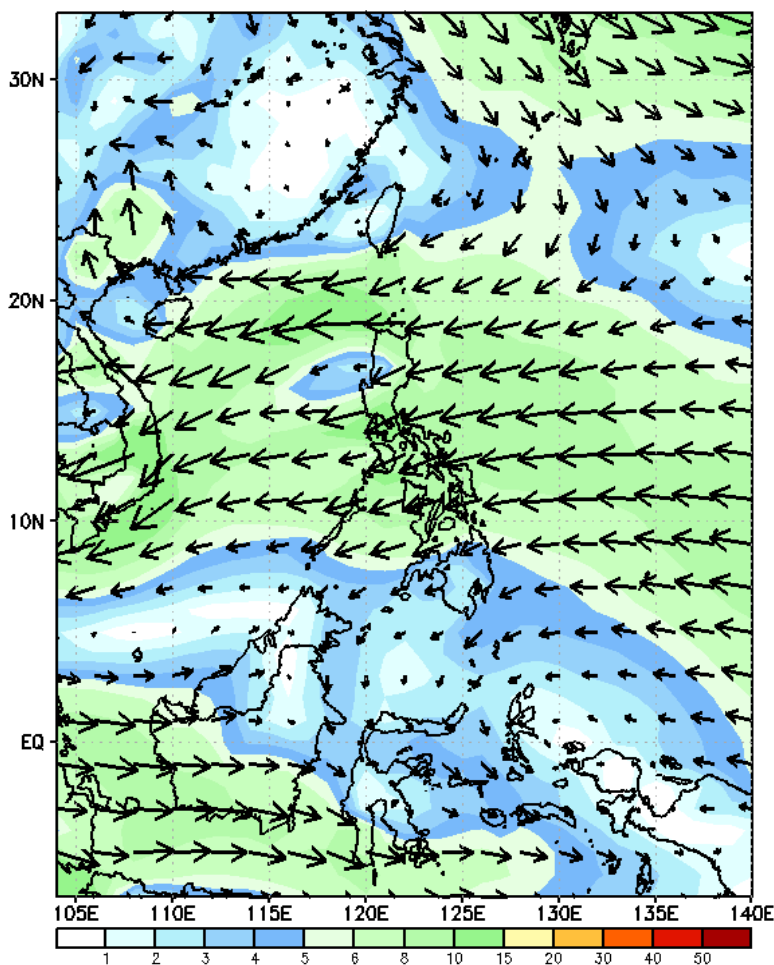
# Week 1 & Week 2 Forecast for the Philippines using GEFS Model



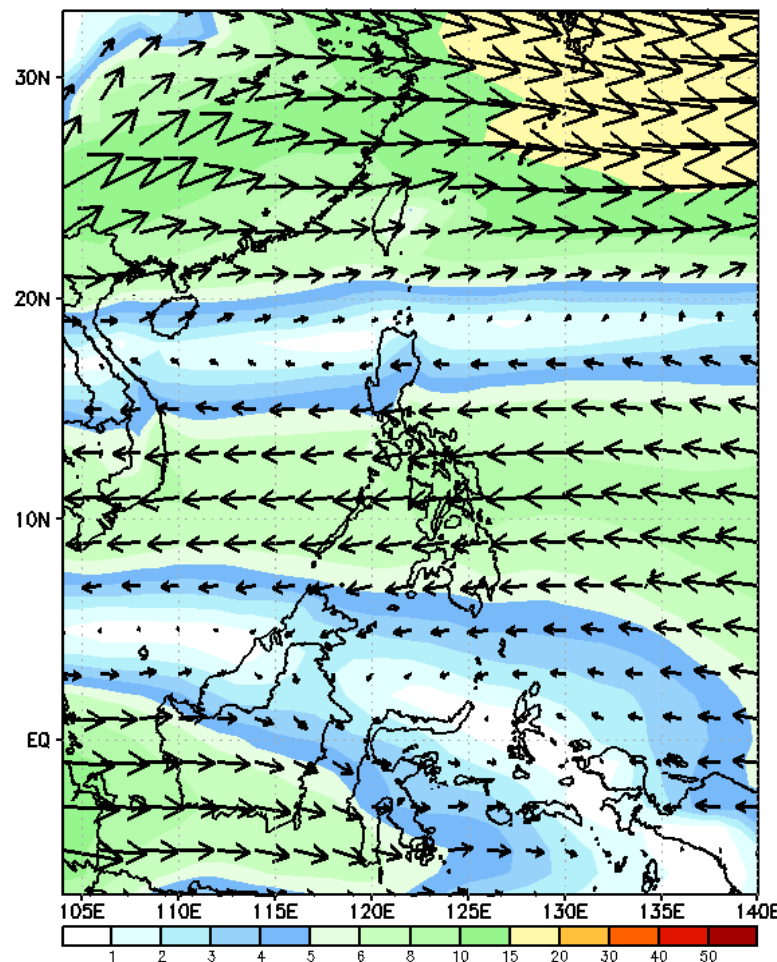
# GEFS Week-1 Wind Forecasts:

Week 1: Dec 04-10, 2024

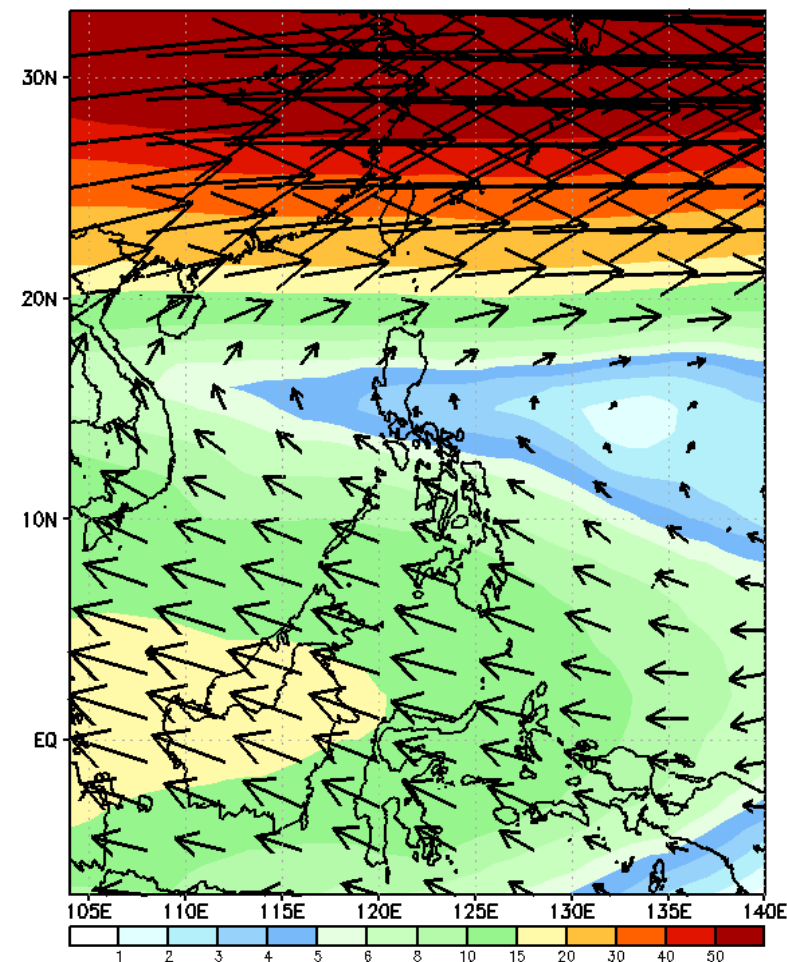
GEFS Week-1 850-hPa Wind Total  
Valid: 20241204 - 20241210



GEFS Week-1 700-hPa Wind Total  
Valid: 20241204 - 20241210

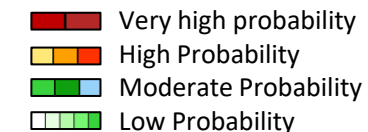


GEFS Week-1 200-hPa Wind Total  
Valid: 20241204 - 20241210



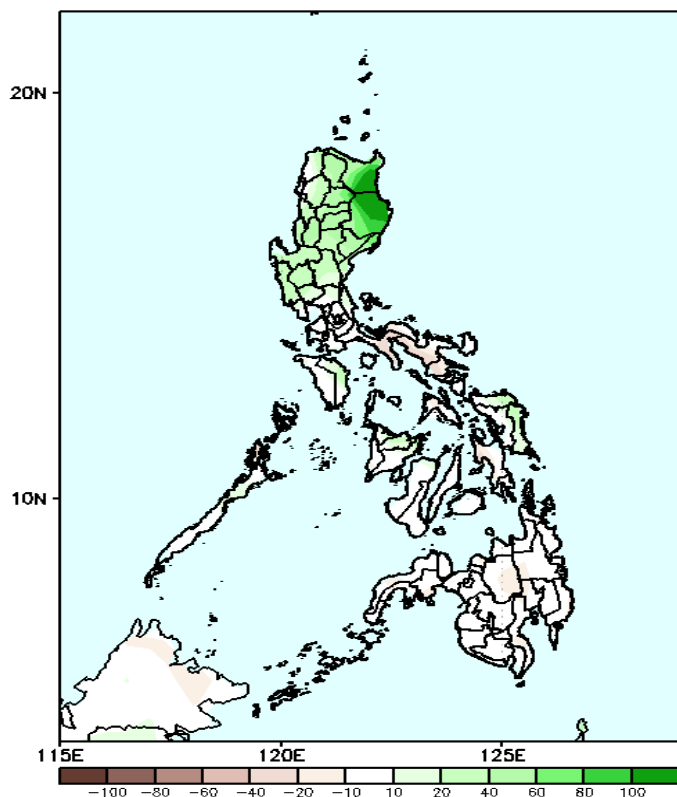
Northeast Monsoon affecting Northern Luzon while Easterlies affecting the rest of the country during the forecast period

# Precipitation Anomaly and Exceedance Probability > 25/50 mm



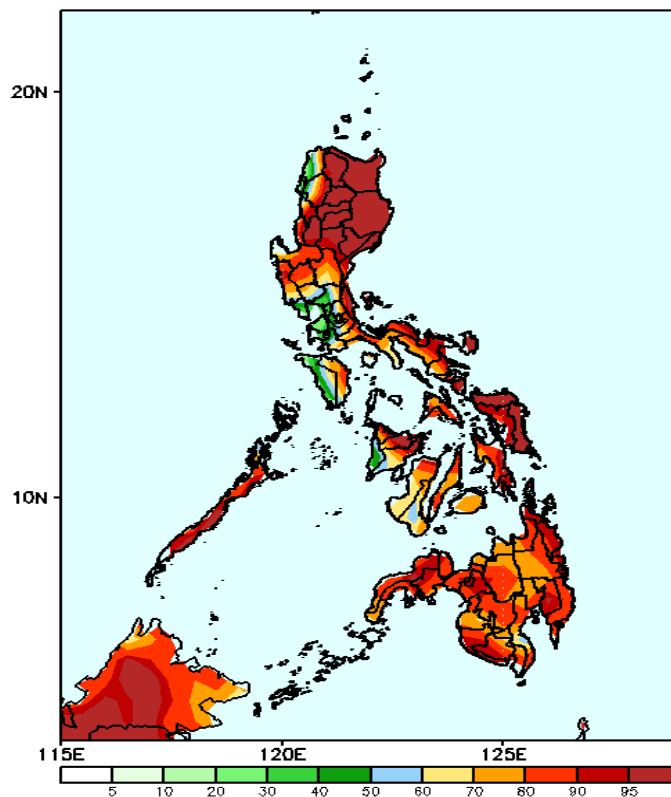
## Week 1: Dec 04-10, 2024

GEFS Week-1 Precip Anomaly  
Valid: 20241204 - 20241210



Increase of rainfall of 10-60mm is most likely in Northern and Central Luzon, Oriental Mindoro and parts of Visayas during the forecast period.

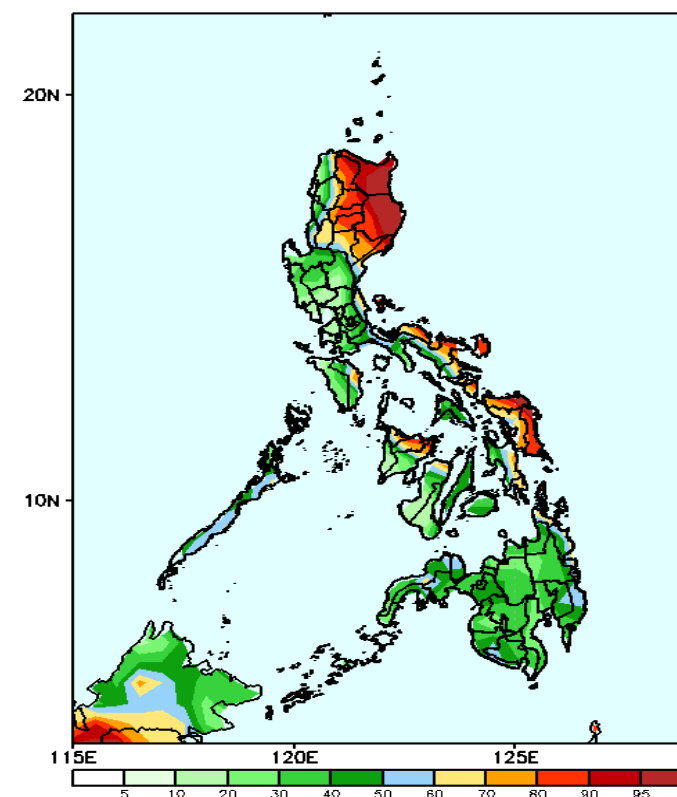
GEFS Week-1 Exceedance Prob. > 25mm  
Valid: 20241204 - 20241210



### Probability to Exceed 25mm

- High to very high over most parts of the country
- Moderate to high over Ilocos Norte, Abra, Bataan, Pampanga, Bualcan, western part of CALABARZON, Occ. Mindoro, Antique and Negros Island.

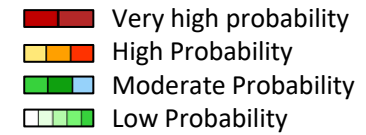
GEFS Week-1 Exceedance Prob. > 50mm  
Valid: 20241204 - 20241210



### Probability to Exceed 50mm

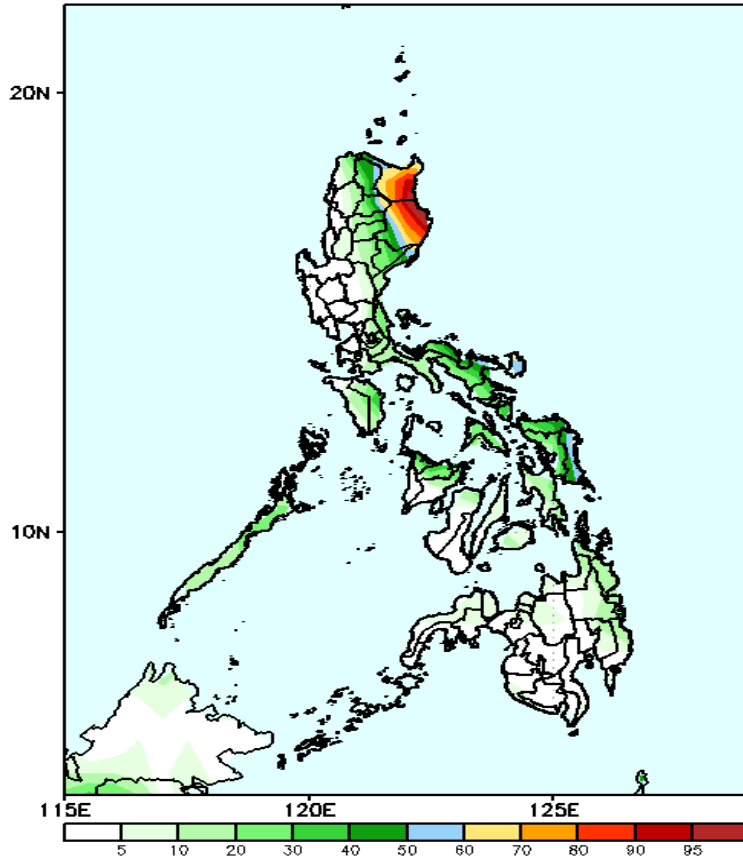
- High to very high over Batanes, Cagayan, Isabela, most of CAR, Catanduanes and Northern and Eastern Samar;
- Moderate to high over Abra, Benguet, the rest of Bicol Region, northern part of Panay Island and Negros Occidental, the rest of Eastern Visayas, Surigao Provinces and the central part of Zamboanga Peninsula;
- Low to moderate over the rest of the country.

# Exceedance Probability > 100/150/200 mm

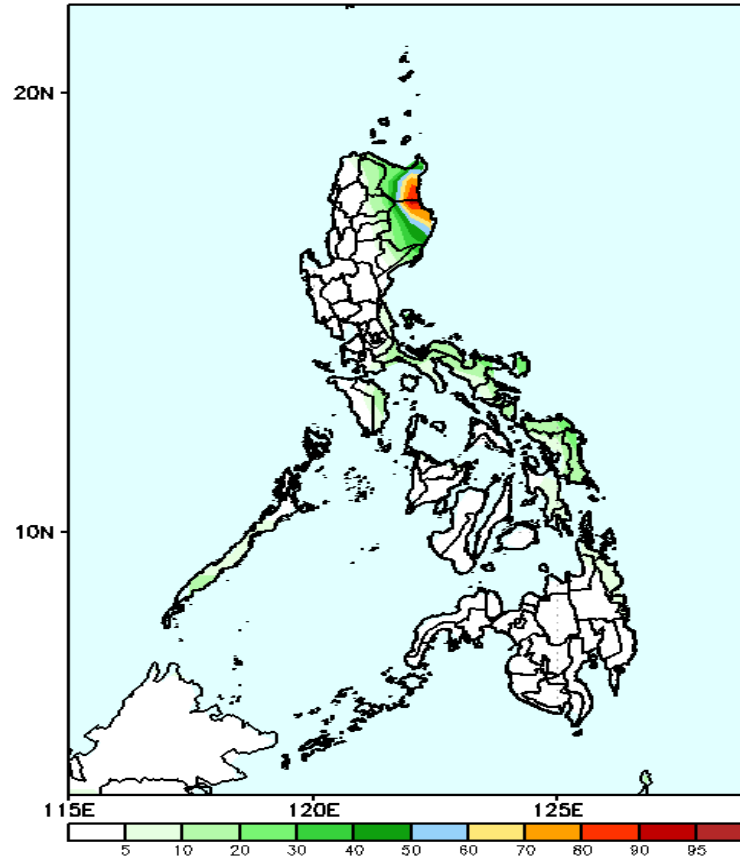


## Week 1: Dec 04-10, 2024

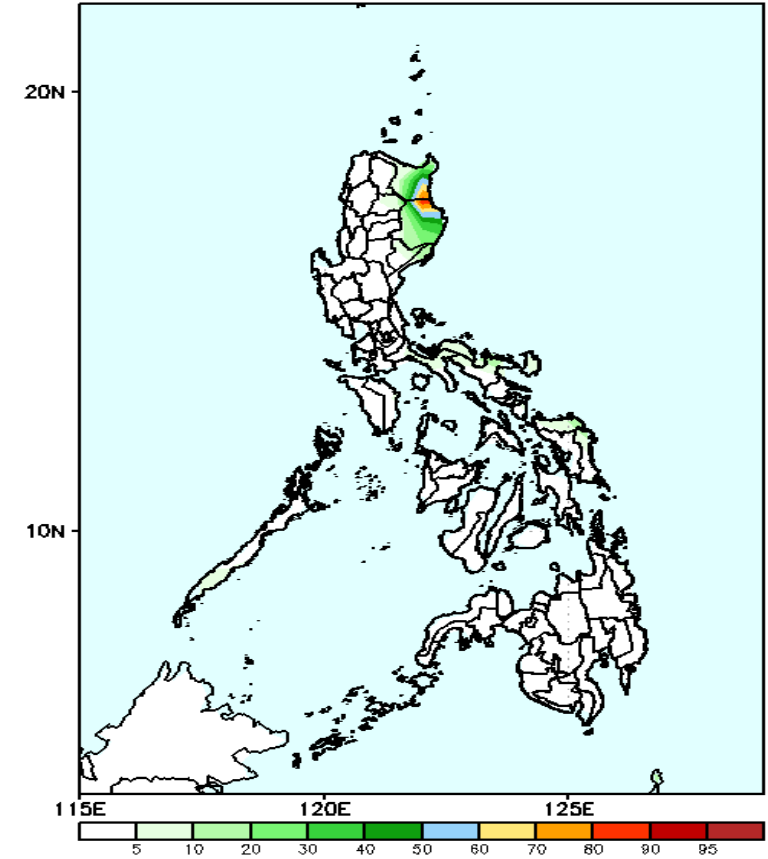
GEFS Week-1 Exceedance Prob. > 100mm  
Valid: 20241204 - 20241210



GEFS Week-1 Exceedance Prob. > 150mm  
Valid: 20241204 - 20241210



GEFS Week-1 Exceedance Prob. > 200mm  
Valid: 20241204 - 20241210



### Probability to Exceed 100mm

- High to very high over Batanes and the eastern part Cagayan and Isabela;
- Moderate to high over the rest of Cagayan and Isabela and the eastern part of Apayao and Kalinga;
- Moderate to low over the rest of Eastern Luzon and Eastern Visayas; eastern section of Cagayan and Isabela;
- Low over the rest of the country.

### Probability to Exceed 150mm

- Moderate to high over portions of Cagayan and Isabela;
- Low over the rest of the country.

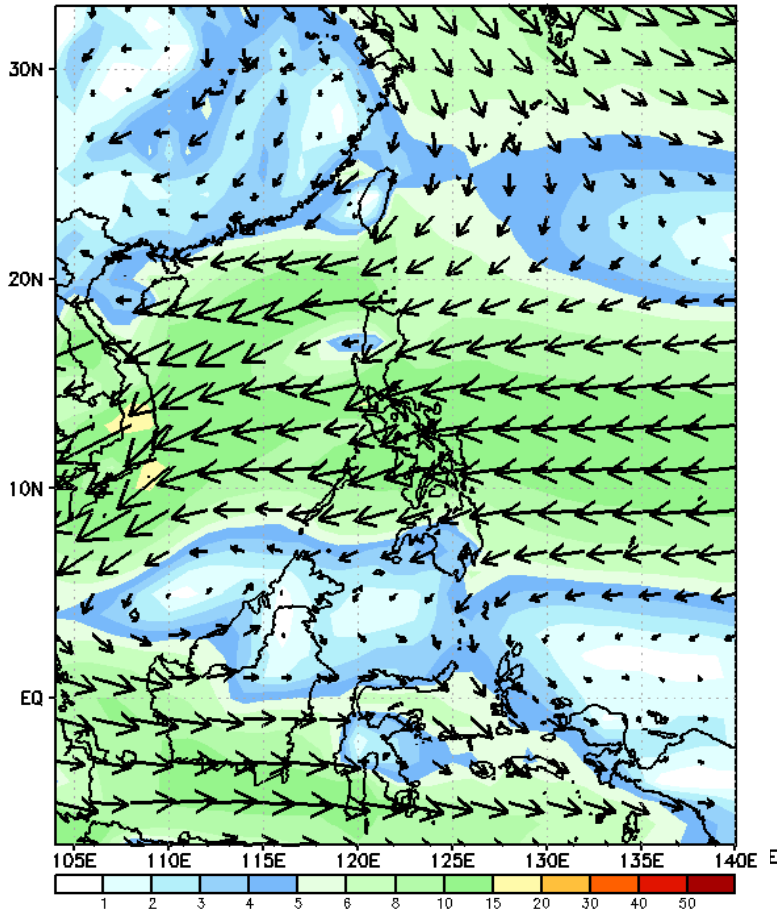
### Probability to Exceed 200mm

- Moderate to high over portions of Cagayan and Isabela;
- Low over the rest of the country.

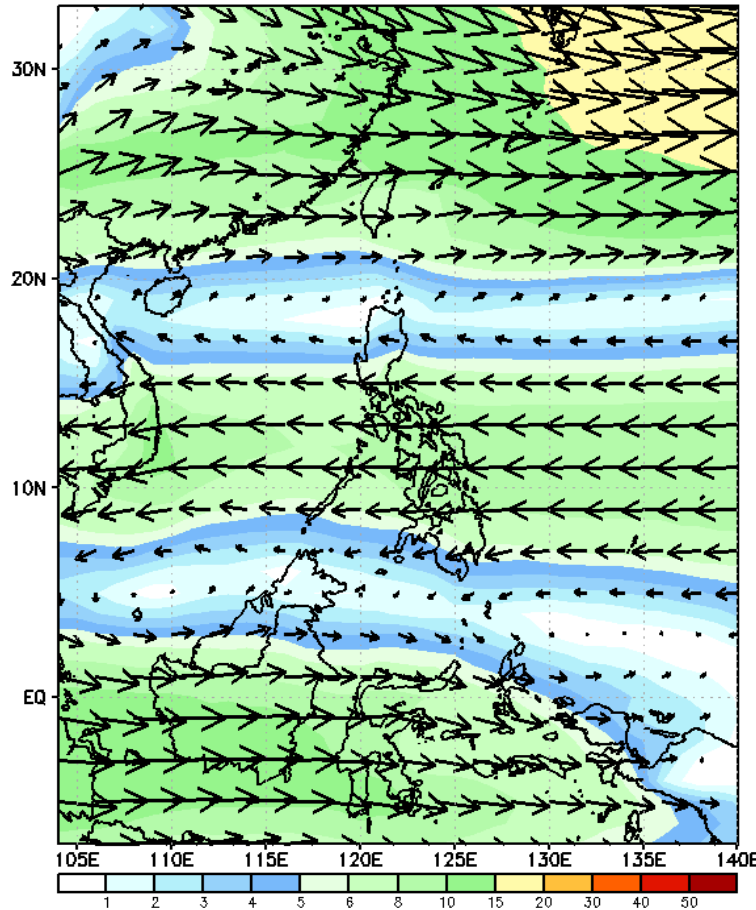
# GEFS Week-2 Wind Forecasts:

Week 2: Dec 09-15, 2024

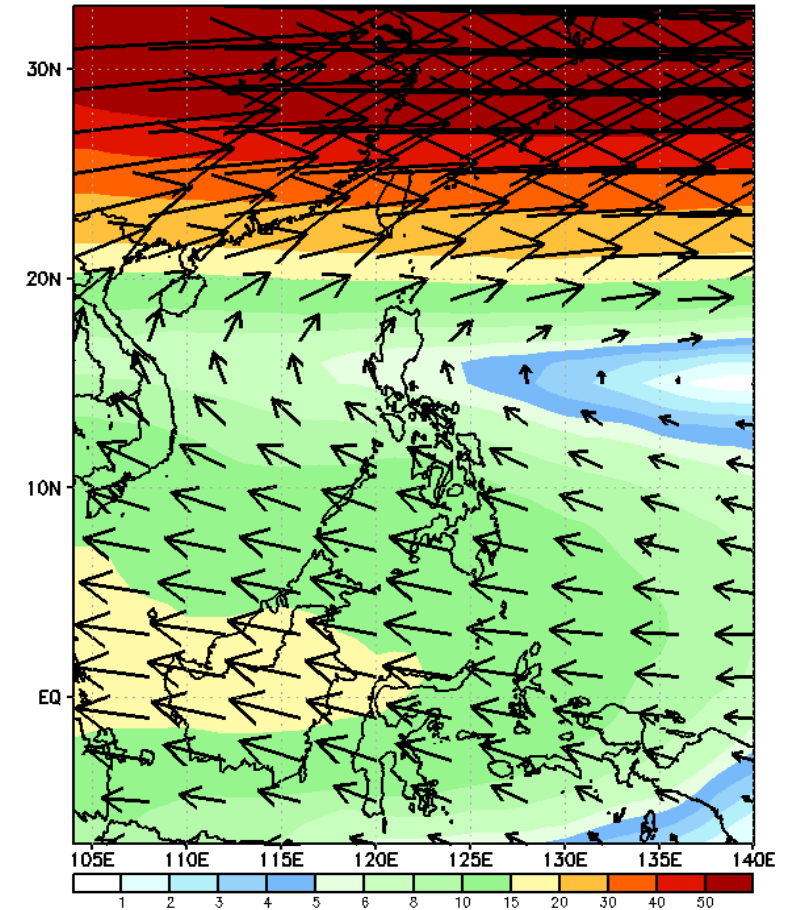
GEFS Week-2 850-hPa Wind Total  
Valid: 20241211 - 20241217



GEFS Week-2 700-hPa Wind Total  
Valid: 20241211 - 20241217

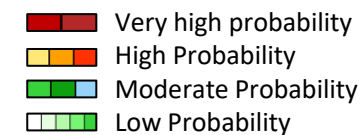


GEFS Week-2 200-hPa Wind Total  
Valid: 20241211 - 20241217



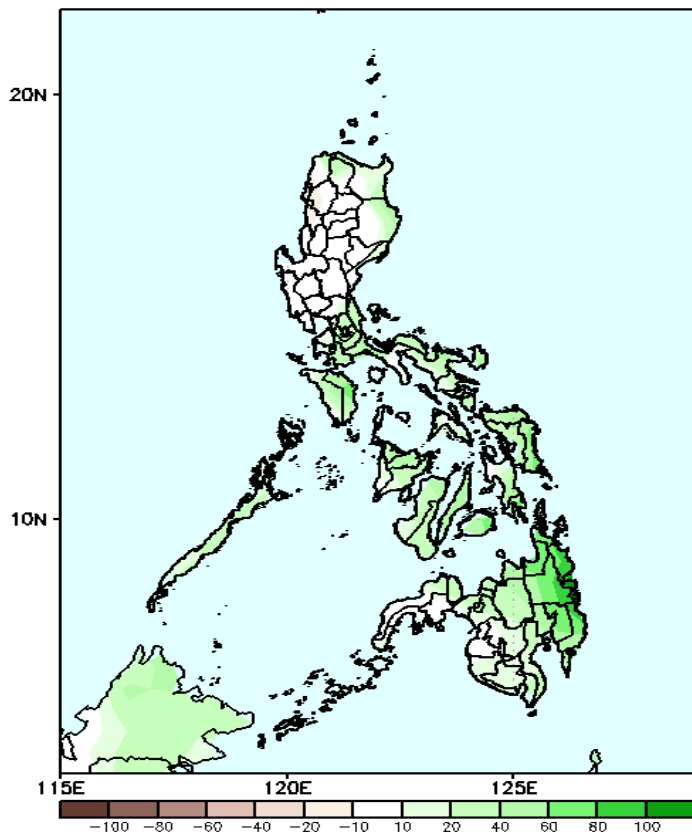
Northeast Monsoon will likely affect Northern and Central Luzon while Easterlies will likely affect the rest of the country during the forecast period

# Precipitation Anomaly and Exceedance Probability > 25/50 mm

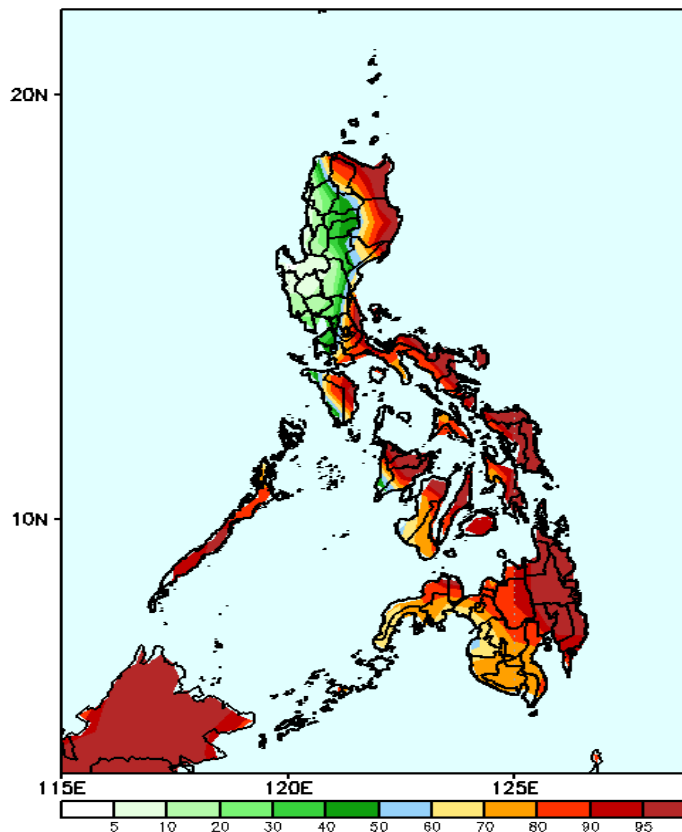


Week 2: Dec 11-17, 2024

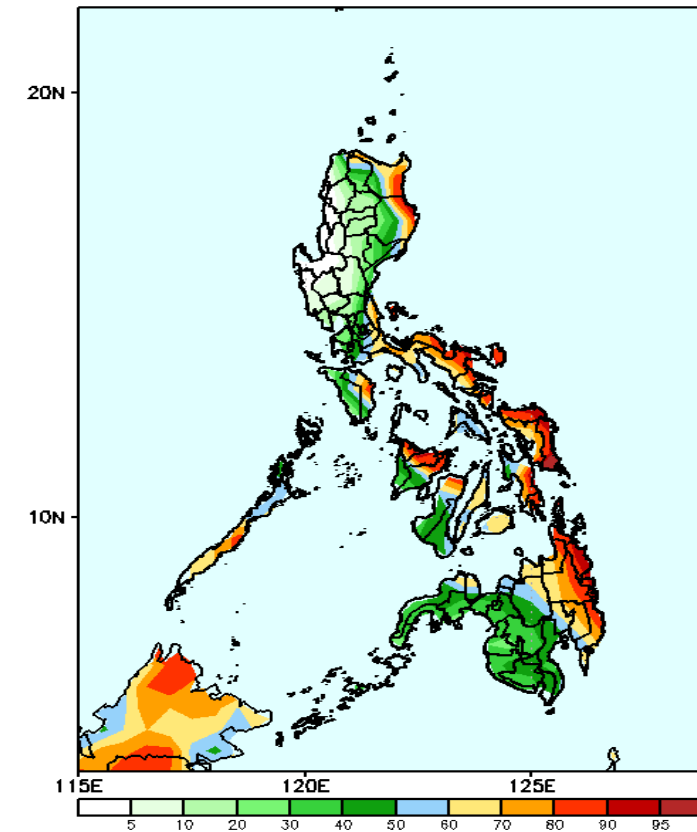
GEFS Week-2 Precip Anomaly  
Valid: 20241211 - 20241217



GEFS Week-2 Exceedance Prob. > 25mm  
Valid: 20241211 - 20241217



GEFS Week-2 Exceedance Prob. > 50mm  
Valid: 20241211 - 20241217



Increase of Rainfall of 20-80mm is most likely in most parts of the country except the west and central parts of Northern Luzon and most of Central Luzon during the forecast period.

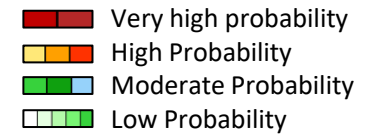
## Probability to Exceed 25mm

- High to very high over most parts of Eastern Luzon, Palawan, Visayas and Mindanao;
- Moderate to high over Apayao, eastern part of Ilocos Norte, Rizal, NCR, Batangas, the rest of MIMAROPA and Antique;
- Low over the rest of Luzon.

## Probability to Exceed 50mm

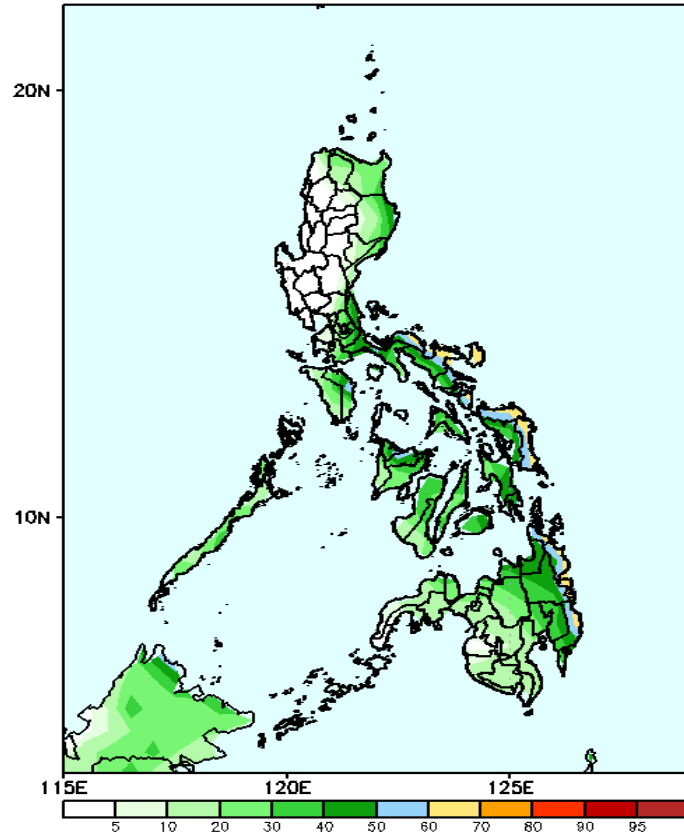
- High to very high over the eastern part of Bicol Region, Aklan, Capiz, Samar Provinces and most of Eastern Mindanao;
- Moderate to high over Batanes, northern part of Apayao, Cagayan, the eastern part of Isabela, and the rest of Southern Luzon, Visayas, and Mindanao;
- Low over the rest of Luzon.

# Exceedance Probability > 100/150/200 mm



## Week 2: Dec 11-17, 2024

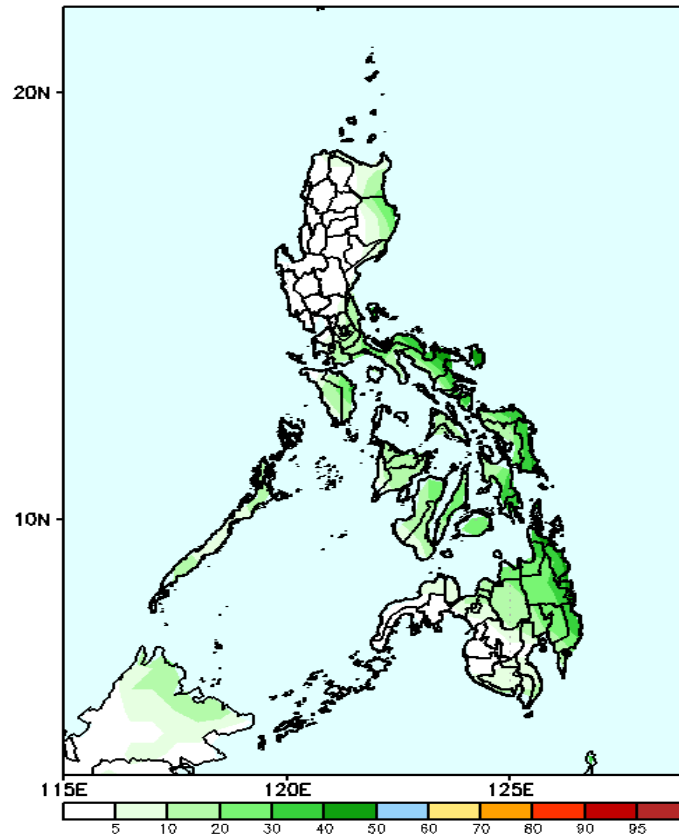
GEFS Week-2 Exceedance Prob. > 100mm  
Valid: 20241211 - 20241217



### Probability to Exceed 100mm

- Moderate to high over Bicol Region, Samar Provinces, Surigao Provinces and Davao Oriental;
- Low to moderate over the rest of Southern Luzon, Visayas and Mindanao;
- Low over the rest of Luzon.

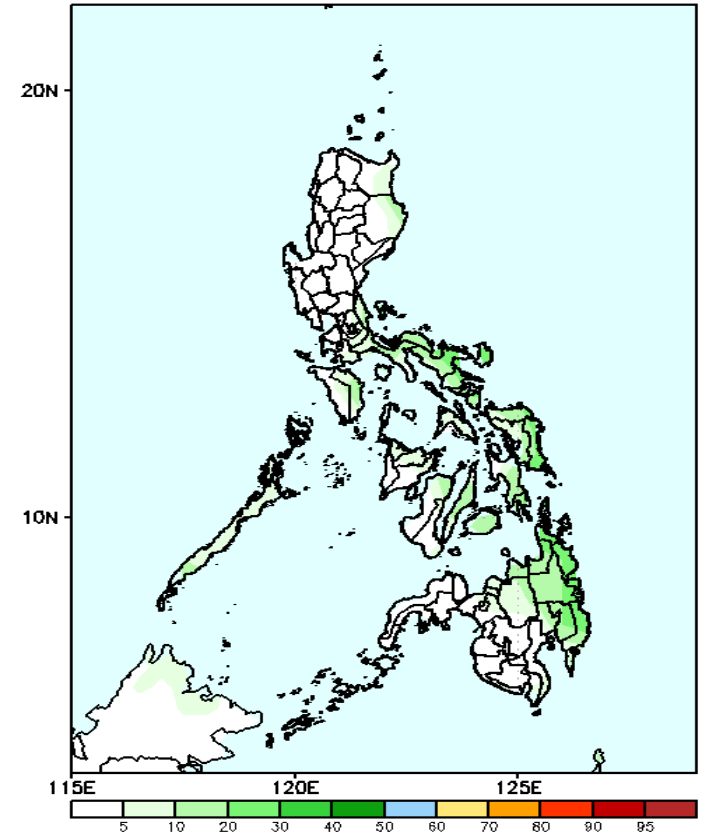
GEFS Week-2 Exceedance Prob. > 150mm  
Valid: 20241211 - 20241217



### Probability to Exceed 150mm

- Low to moderate over Bicol Region and Eastern Visayas;
- Low over the rest of the country.

GEFS Week-2 Exceedance Prob. > 200mm  
Valid: 20241211 - 20241217

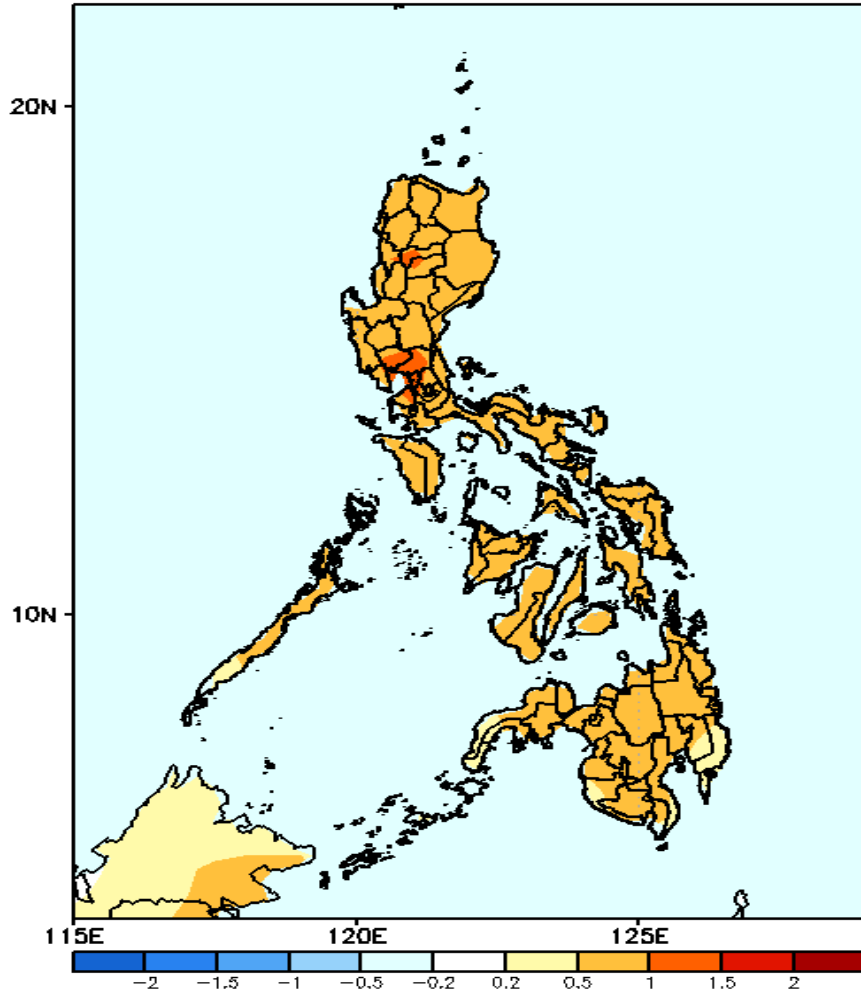


### Probability to Exceed 200mm

- Low across the country.

# GEFS Week-1 & 2 Forecasts: T2m Anomaly

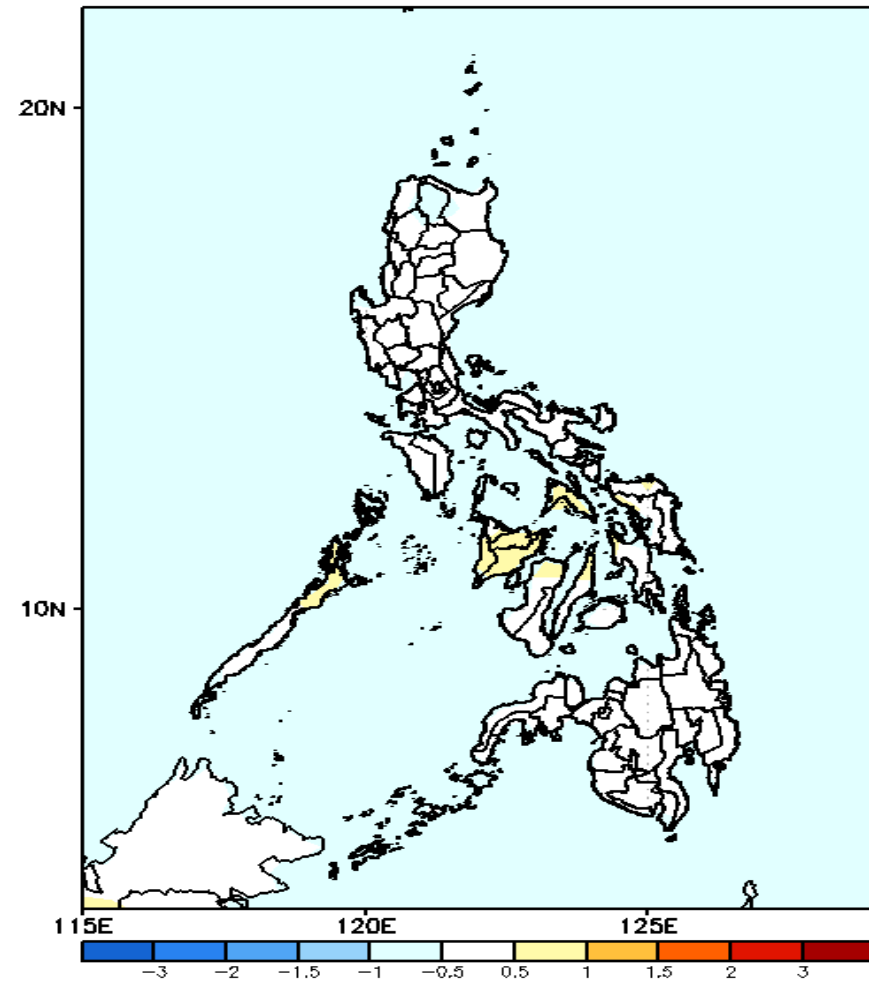
GEFS Week-1 T2m Anomaly  
Valid: 20241204 – 20241210



## 2m Temperature Week 1: Dec 04-10, 2024

Warmer than average surface air temperature will likely be experienced in most parts of the country.

GEFS Week-2 T2m Anomaly  
Valid: 20241211 – 20241217



## 2m Temperature Week 2: Dec 11-17, 2024

Near average surface air temperature will likely be experienced in most parts of the country except in Masbate, northern part of Palawan, Negros Occidental and Cebu where slightly warmer than average surface air temperature will be likely

